

Modalità tipo di ripristino pavimentazione stradale

Strade con carreggiata sino a 4,00 m

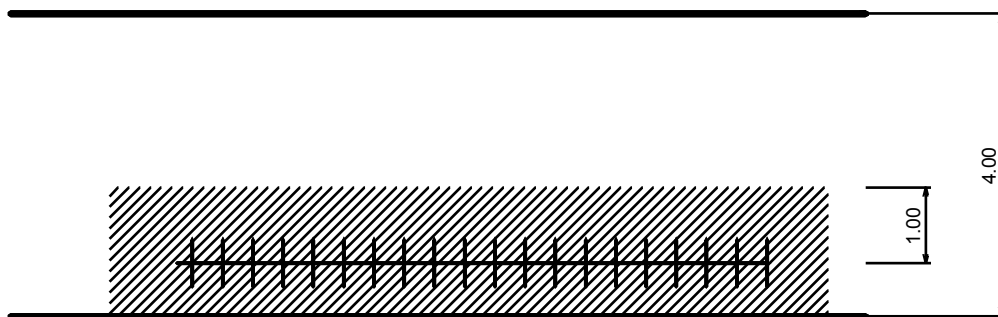
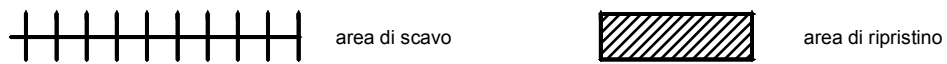


FIG.1: Scavo longitudinale alla carreggiata

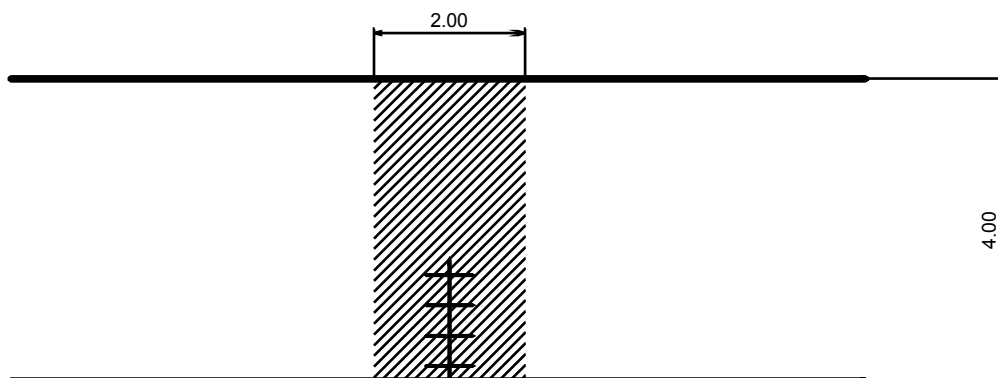


FIG.2: Scavo trasversale alla carreggiata

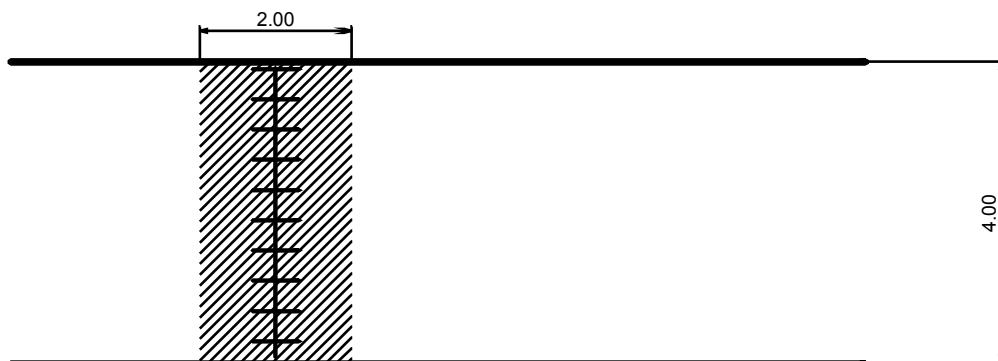


FIG.3: Scavo trasversale alla carreggiata

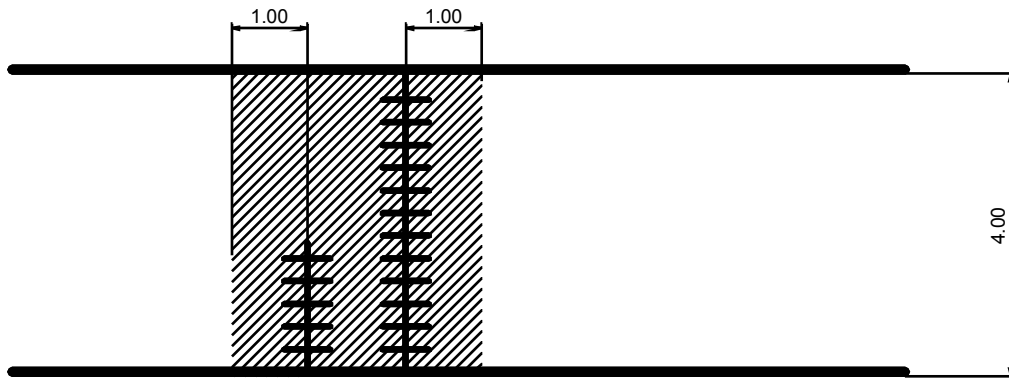


FIG.4: Doppio scavo trasversale alla carreggiata

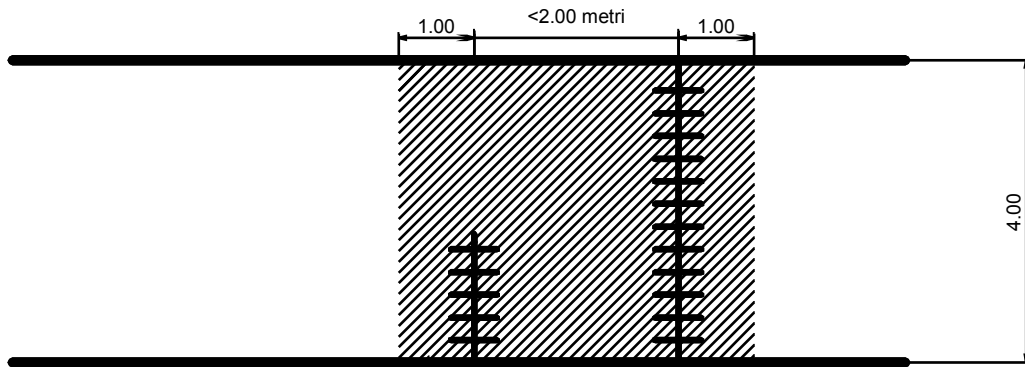


FIG.5: Scavi multipli

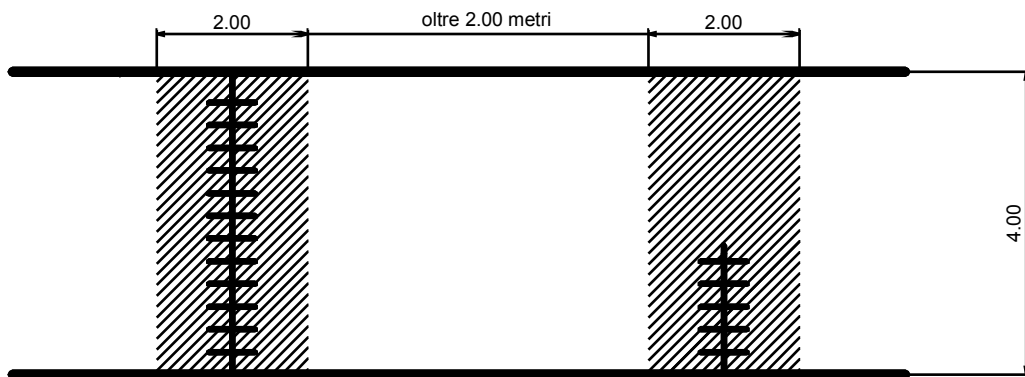


FIG.6: Scavi multipli

Strade con carreggiata di oltre 4,00 m

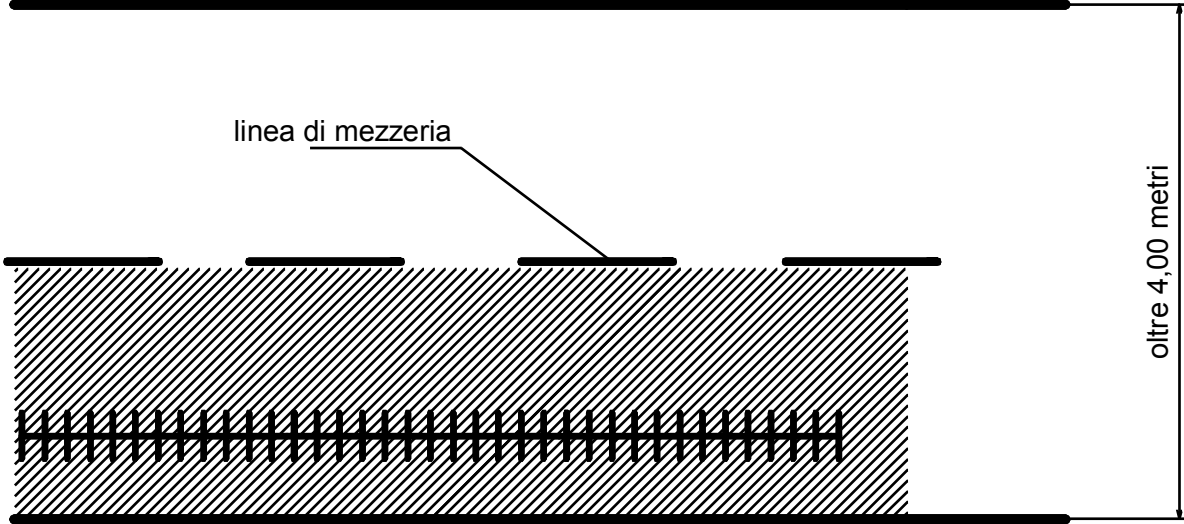


FIG.7: Scavo longitudinale alla carreggiata

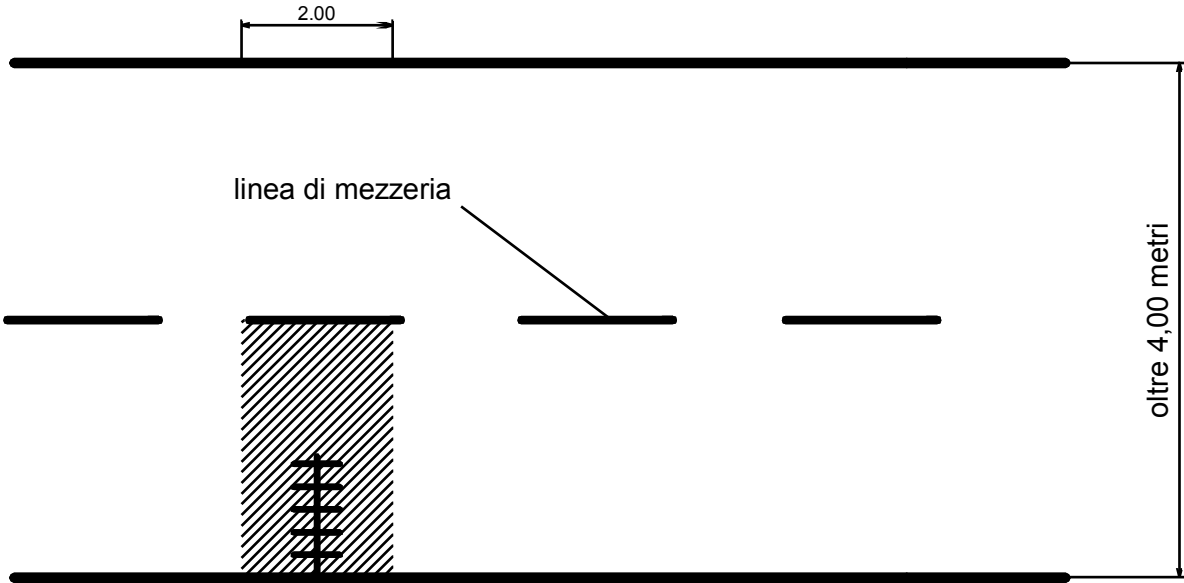


FIG.8: Scavo trasversale alla carreggiata

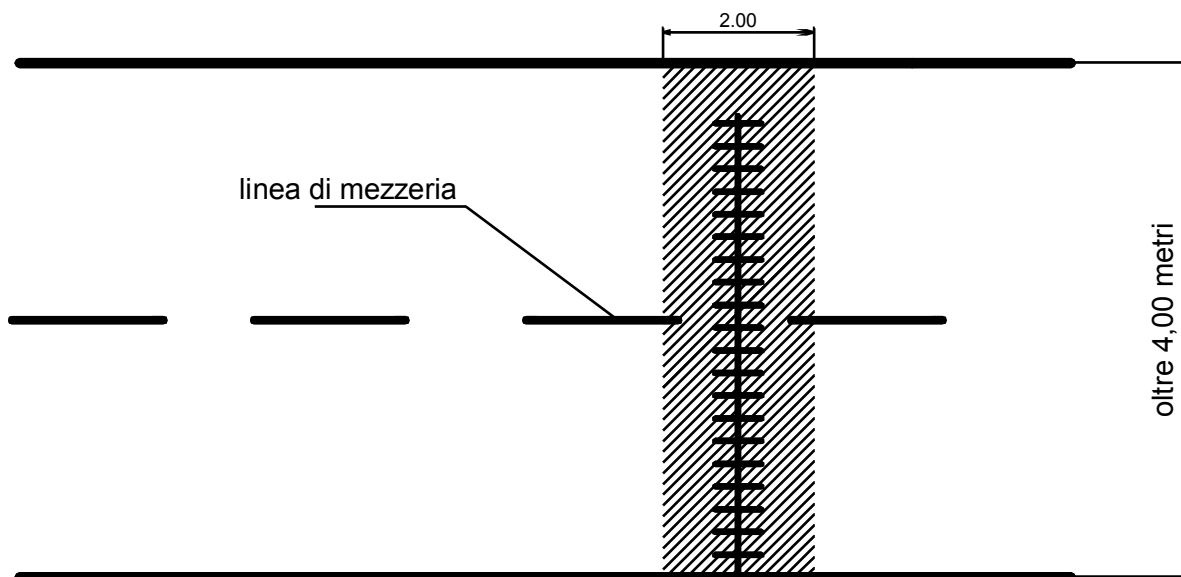


FIG.9: Scavo longitudinale alla carreggiata

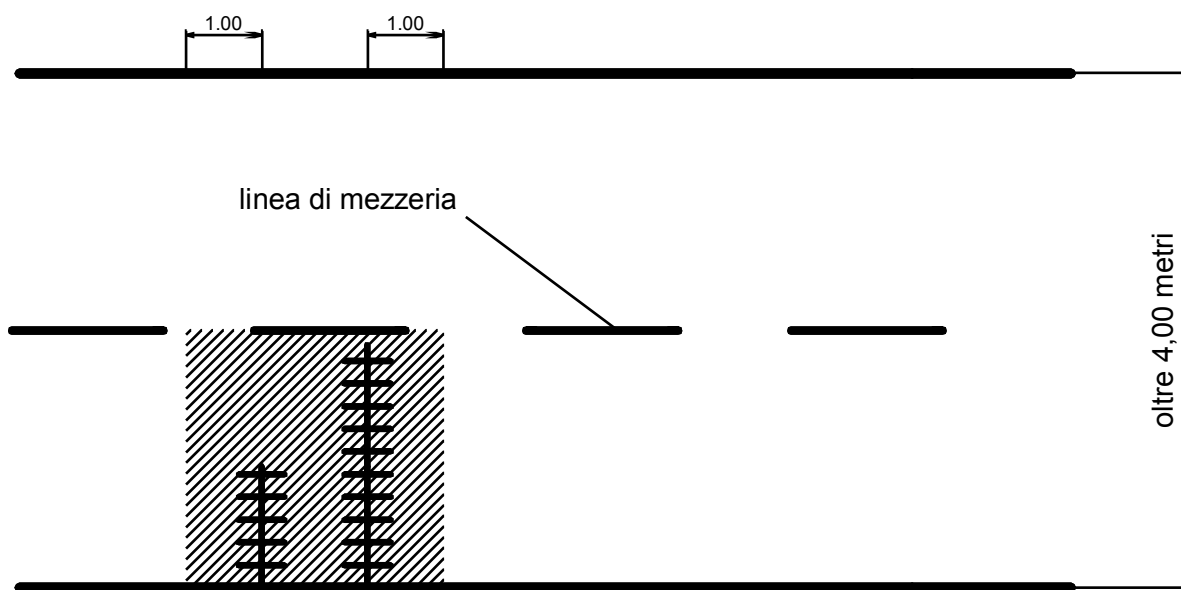


FIG.10: Doppio scavo trasversale alla carreggiata

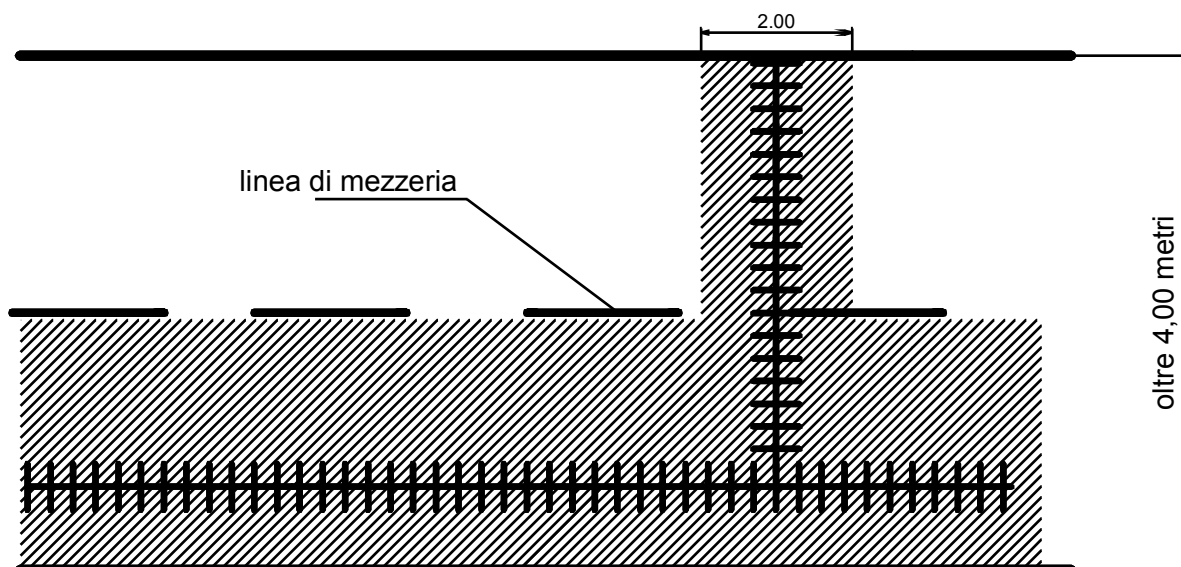


FIG.11: Scavo longitudinale e trasversale

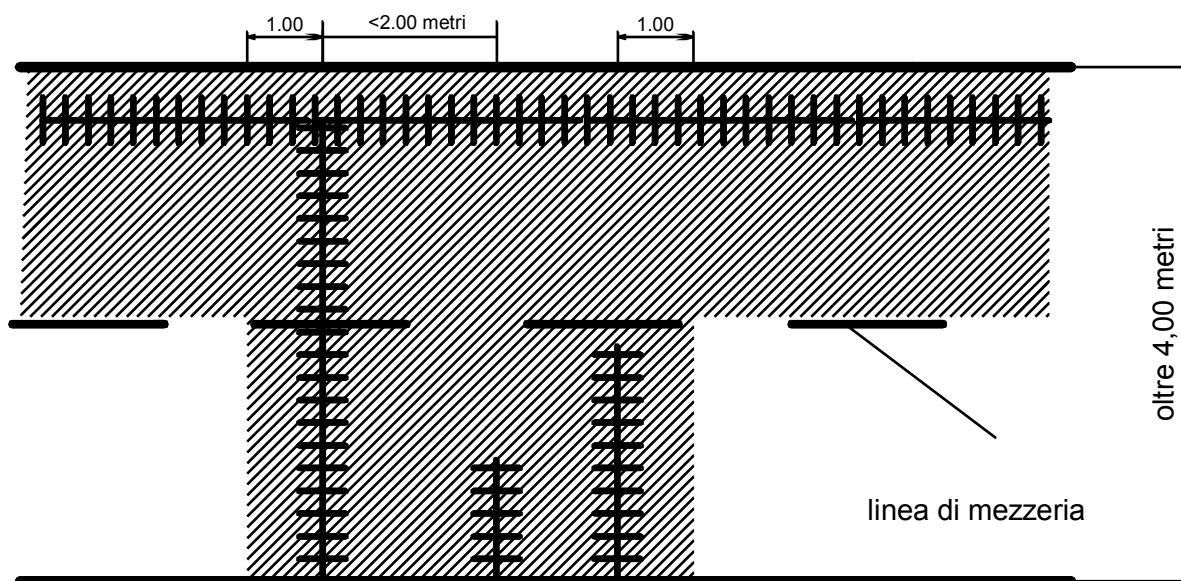


FIG.12: Scavi multipli

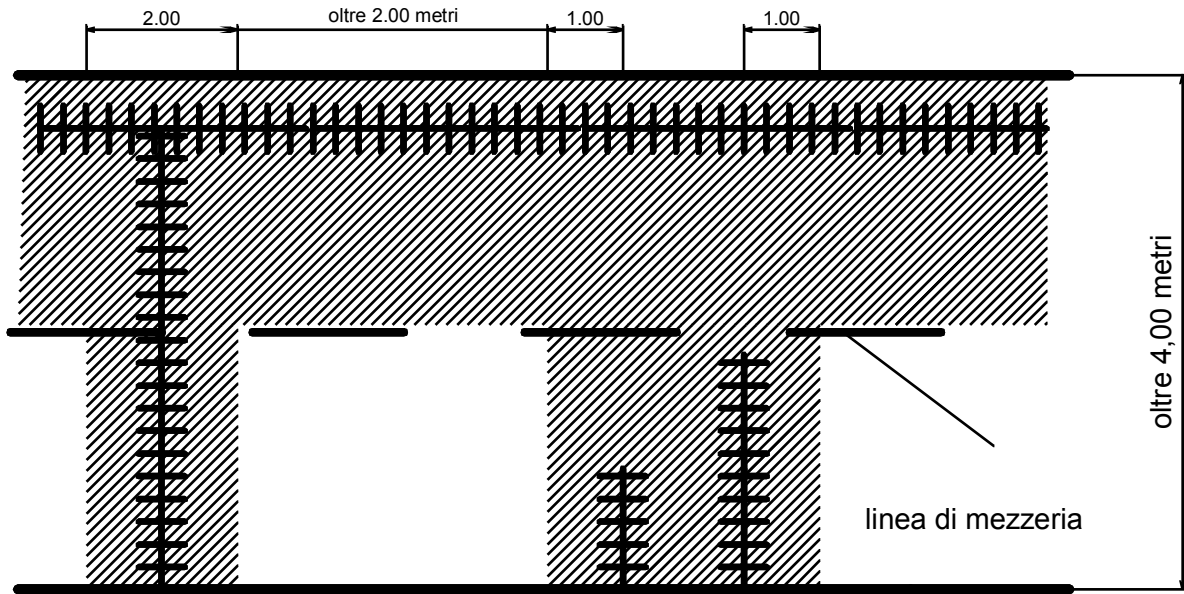


FIG.13: Scavi multipli

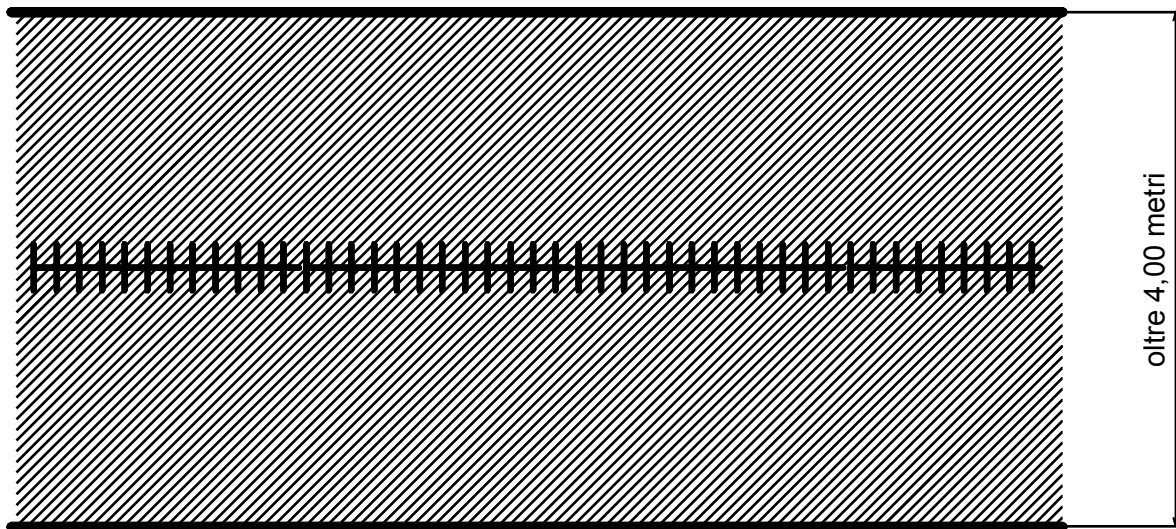


FIG.14: Scavo al centro della strada